

DATE: January 22, 2015

TO: Recreation and Parks Commission

CC: Bradley J. Hudson, County Executive,
Robert B. Leonard, Chief Deputy County Executive,
Paul Lake, Director, Human Assistance

FROM: Jeffrey R. Leatherman, Director, Regional Parks

SUBJECT: Financial Impact Of Illegal Camping Within Regional Park Facilities

In January of 2013 the Recreation and Parks Commission requested an annual report on the financial impacts of illegal camping for the Department. Included with this report are the direct costs related to managing and enforcing illegal camping in Regional Parks. This report does not include the long term costs or environmental impacts associated with illegal camping including, vegetation destruction, hazardous waste dumping or wildlife impacts due to dogs and other human related activities.

Respectfully,

Jeffrey R. Leatherman

Department of Regional Parks Illegal Camping Staff

Sunday	Monday	Tuesday	Wednesday	Thursday	Friday	Saturday
2 Rangers 11am-8pm (varies depending on daylight)	2 Rangers 11am-8pm (varies depending on daylight)	2 Rangers 11am-8pm (varies depending on daylight)	2 Rangers 6am-4pm & 2 Rangers 11am-8pm (varies depending on daylight)	2 Rangers 6am-4pm	2 Rangers 6am-4pm	2 Rangers 6am-4pm
1 Maint. Worker 11am-9pm (varies depending on daylight)	1 Maint. Worker 11am-9pm (varies depending on daylight)	1 Maint. Worker 11am-9pm (varies depending on daylight)	2 Maint. Worker 6am- 4pm	1 Maint. Worker 6am- 4pm (varies depending on daylight)	1 Maint. Worker 6am- 4pm (varies depending on daylight)	1 Maint. Worker 6am- 4pm (varies depending on daylight)
Overtime Shift 2pm- 7pm (Split between Dry Creek & American River Parkway)	Overtime Shift 2pm- 7pm (Split between Dry Creek & American River Parkway)	Overtime Shift 2pm- 7pm (Split between Dry Creek & American River Parkway)		Overtime Shift 2pm- 7pm (Split between Dry Creek & American River Parkway)	Overtime Shift 2pm- 7pm (Split between Dry Creek & American River Parkway)	Overtime Shift 2pm- 7pm (Split between Dry Creek & American River Parkway)
			Probation Work Crew (8 Hours)	Sheriff Work Crew (8 Hours)	Sheriff Work Crew (8 Hours)	

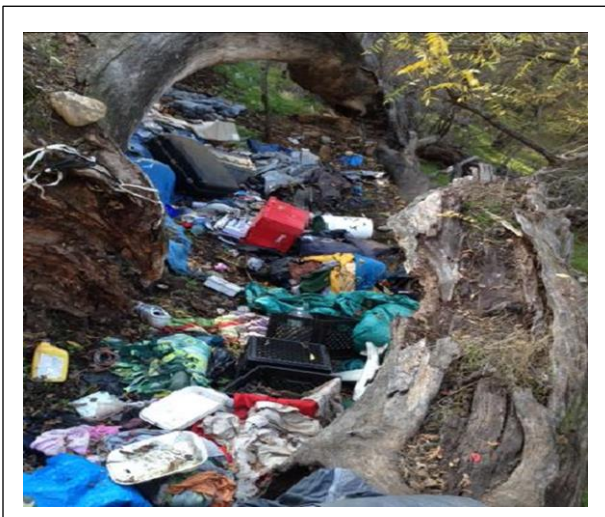
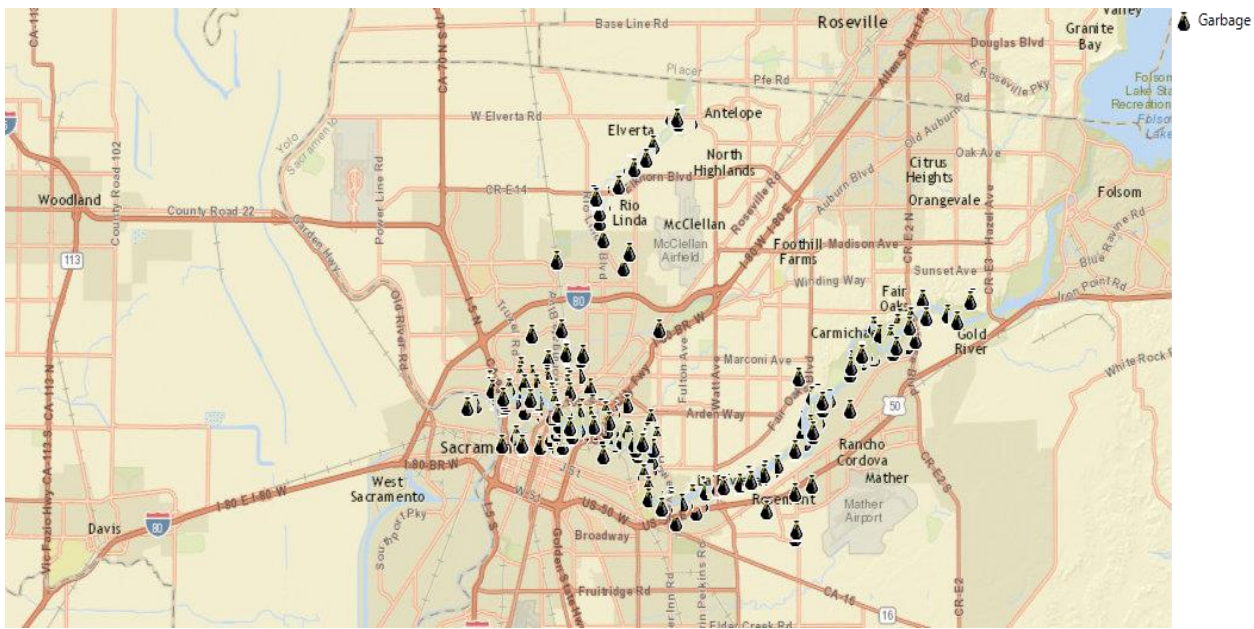
Department Reporting System

The Department began to use a subscription based reporting system in 2013 which allowed us to track all Ranger activity including our response to illegal camping. Department maintenance staff, rangers and community members have multiple ways to report illegal camping activity to the department, including online reporting, e-mail notification, Sacramento County 311, and by phone 875-PARK (7275). In 2014, 59 citizen reports of illegal camps were received via the website reporting system.

Garbage

Our illegal camping offenders often carry a significant amount of commercial and household waste into the parks in order to sort through the trash to look for reusable items. The remaining unused items and camping trash including food waste, human waste and other trash are left behind.

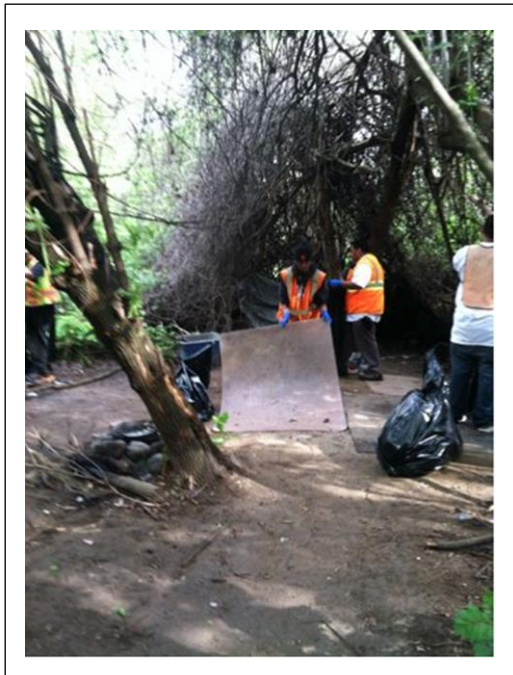
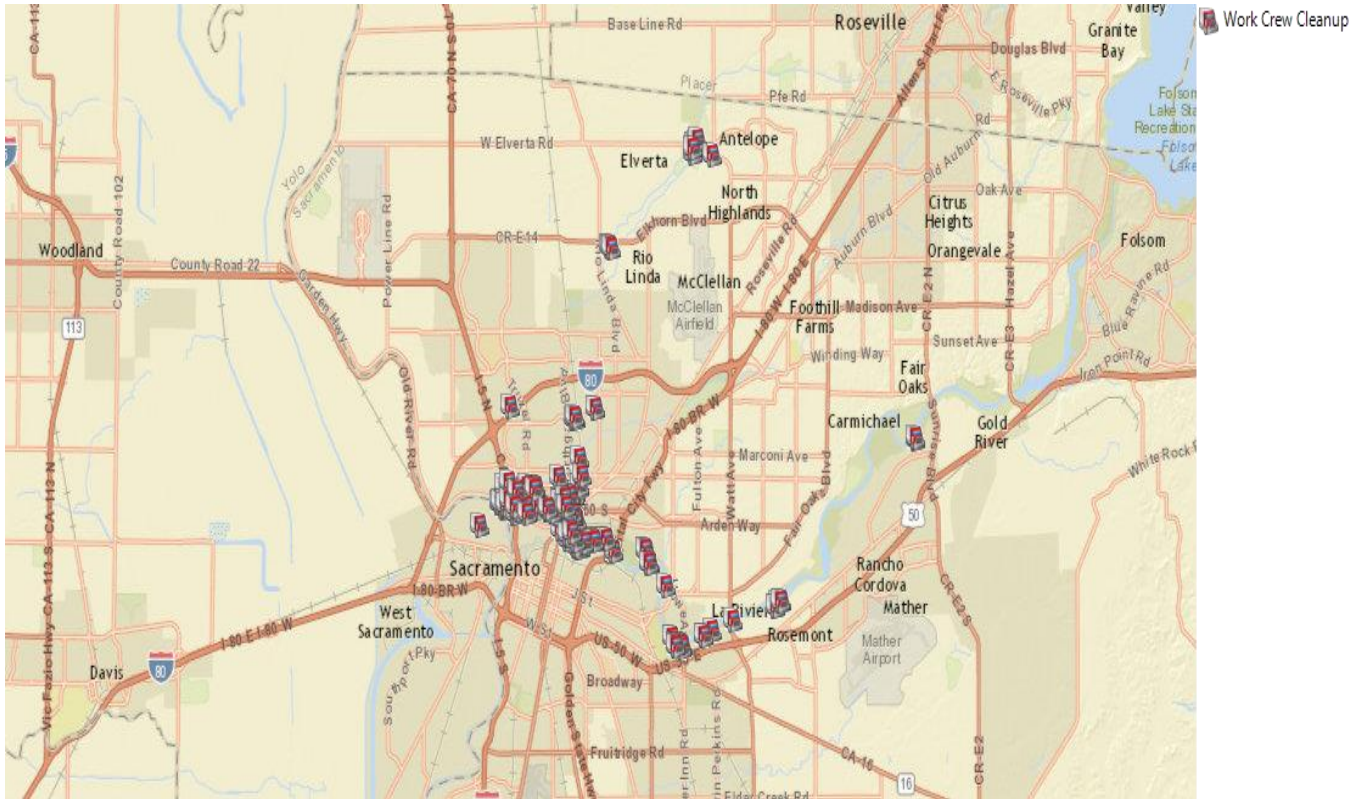
In 2014, the Department cleaned 1,257 trash sites related to illegal camping (1,355 in 2013). The icons on this map represent the locations where staff cleaned up garbage.



Sheriff and Probation work crew clean up

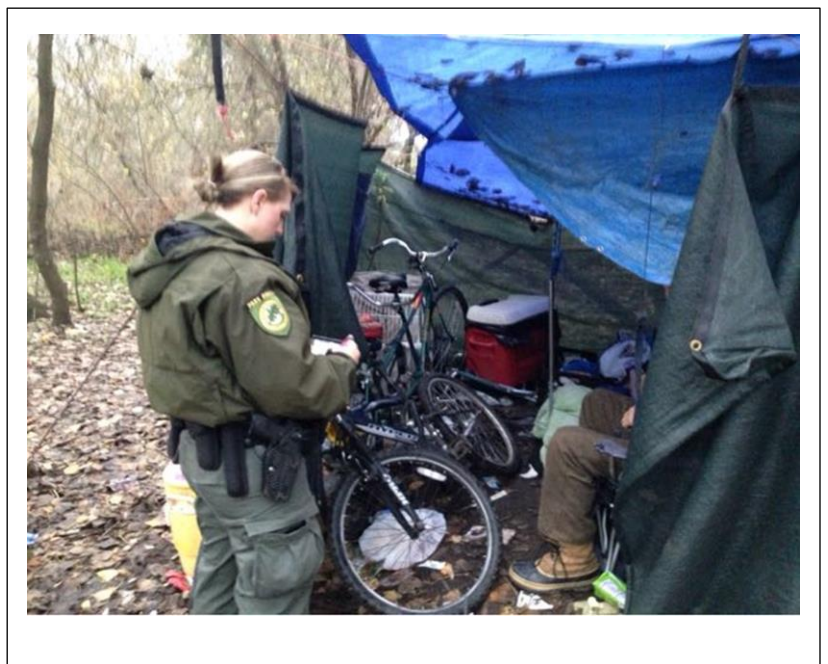
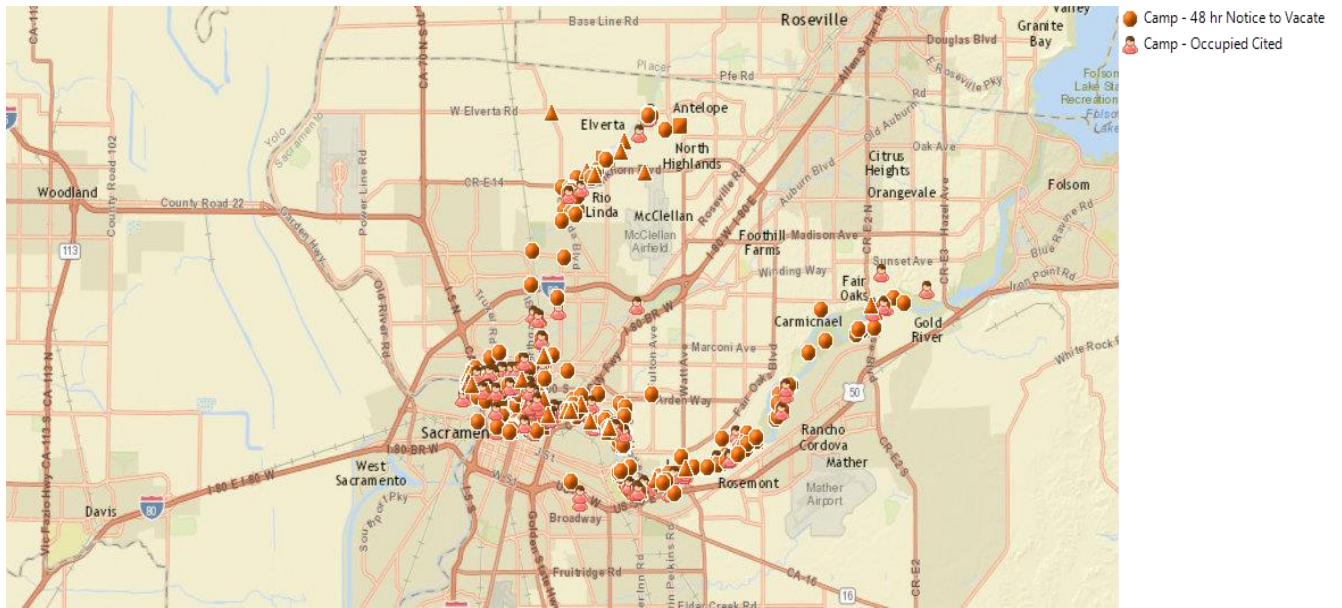
The Department partners with the Probation Department 1 day a week and the Sheriff Department 2 days a week. These crews clean up large trash and debris fields generally associated with large encampments. These crews work with our Rangers and Maintenance staff to maximize effort and results.

In 2014, the work crews cleaned up 291 (337 in 2013) sites in addition to the department cleaned garbage sites. The icons on this map represent the locations for work crew clean ups.



Illegal Camping

Illegal camping continues to impact Regional Park facilities throughout Sacramento County. Sacramento County and Sacramento City ordinances prohibit camping in Regional Parks. Our Ranger team responded to 1,136 camp sites in and around Regional Park facilities (1,277 in 2013). In addition to the camp sites the Rangers issued 756 citations in 2014 related to illegal camping (782 in 2013). The icons on this map represent the locations rangers responded to illegal camping in 2014.



Financial Impacts of Illegal Camping

Ranger Staff Time and Equipment	\$741,454
Maintenance Staff Time and Equipment	\$87,884
Total	\$829,338

In addition to the Departments direct expenses the Sheriff Department and Probation Department work crews are provided without a direct charge to Regional Parks.

Probation Work Crew (daily costs \$580)	Approximately \$30,160 annually
Sheriff Work Crew (daily costs \$754)	Approximately \$78,416 annually
City of Sacramento PD Support	2 officers support when available